

NATIVE

EXPLORATION HOLDINGS, LLC

HOA MEETING
NORTHWOOD LAKE ESTATES
JULY 10, 2018

CONFIDENTIAL

Native Leadership

Lane Gibbs

*Co-Founder and
Co-CEO*

- Lane Gibbs is Co-Founder and Co-Chief Executive Officer of Native
- Co-founded Native in 2013 to acquire non-operated working interests, minerals, and royalties in Oklahoma
- Previously Mr. Gibbs worked in various acquisitions and land roles with large public E&P companies
 - Chesapeake Energy (NYSE: CHK) – acquired over 100,000 net acres in Western Oklahoma and managed multiple rig lines totaling 134 horizontal wells
 - ExxonMobil (NYSE: XOM) – South Texas / Eagle Ford / King Ranch – responsibilities included the management of multiple acquisitions and EOG Resources joint venture
- Earned a Bachelor of Business Administration in Energy Management from The University of Oklahoma

Matt Whitaker

*Co-Founder and
Co-CEO*

- Matt Whitaker is Co-Founder and Co-Chief Executive Officer of Native
- Co-founded Native in 2013 to acquire non-operated working interests, minerals, and royalties in the Oklahoma
- Previously founded Midtown Energy I, LLC (“Midtown”) in 2012 to acquire non-operated working interests and royalties in Oklahoma for private investors; Midtown was later merged into Native
- Prior to Midtown, Mr. Whitaker worked in various acquisitions and land roles for Devon Energy (NYSE: DVN)
 - Managed a \$150 million land budget and acquired over 100,000 net acres in the Wolfcamp Shale
 - Responsible for general land functions in West Texas including the management of multiple rig lines
- Earned a Bachelor of Business Administration in Energy Management from The University of Oklahoma

Aaron Borgan

Chief Operating Officer

- Aaron Borgan is Chief Operating Officer at Native and joined the team in 2018
- Previously, Mr. Borgan was the Asset Manager for the Oklahoma Business Unit at LINN Energy
 - Began career at LINN as Drilling, Completions and Water Management Manager
 - This included a 9 rig campaign in the Granite Wash drilling over 170 horizontal wells
 - After a promotion to Asset Manager, he was responsible for the technical assessment and operational execution of LINN’s premier Mid-Continent MERGE Asset.
- Earned a Bachelor of Science in Mechanical Engineering from Michigan Technological University and an MBA from Tulane University

Chris Flenthrope

VP - Geology

- Chris Flenthrope is Vice President of Geology at Native and joined the team in 2017
- Previously, Chris worked at Devon Energy working in exploration and development
 - Appraised and developed the Mississippi and Woodford in the Anadarko Basin and Cherokee Platform
 - Evaluated regional geology of the Wolfcamp in the Permian Basin and established plan for appraisal and development
 - Directed geological operations for over 250 horizontal wells in the Anadarko Basin, Permian Basin, and Cherokee Platform
 - Co-taught Devon courses on understanding unconventional resource plays, mapping strategies, well panning, and geosteering
- Earned a M.S. in Geology from Kansas State University

Native Leadership

Lindsey Walton

VP - Engineering

- Lindsey Walton is Vice President of Engineering at Native and joined the team in 2015
- Previously, Mrs. Walton was the Lead Engineer for the Appraisals and New Ventures group at SandRidge Energy
 - Engineer for a \$620 million drilling program focused on delineating the Mississippi Lime in 2014
 - Provided engineering support for A&D evaluations and ongoing planning initiatives
 - Forecasted and monitored over 1,500 producing locations as part of SandRidge's Corporate Reserves group
- Earned a Bachelor of Science in Petroleum Engineering from The University of Oklahoma

Toby Fullbright

VP - Land and A&D

- Toby Fullbright is Vice President of Land and A&D at Native and joined the team in 2017
- Previously, Mr. Fullbright was Land Manager at Meade Energy Corporation
 - While there his function involved all aspects of asset development, prospect generation, maintenance of ownership and well records, and daily land operations
 - Prior to Meade, he was Senior Land at Chesapeake Energy Corporation and was responsible for land duties associated with multiple rig lines
- Attended Oklahoma State University and studied Philosophy and English

Sean Iago

Land Manager

- Sean Iago is Land Manager at Native and joined the team in 2017
- Previously, Mr. Iago was Staff Landman in the Rockies Business Unit at Chesapeake Energy Corporation
 - Team Lead for Rockies Business Unit Development Team
 - This team built a prolific stacked-pay asset containing 350,000 net acres and 10 Federal Exploratory Units
 - Before being promoted to Staff Landman, he served as an E&P Landman in the Powder River Basin team
- Earned a Bachelor of Business Administration in Management from Oklahoma Baptist University

Thomas Moratto

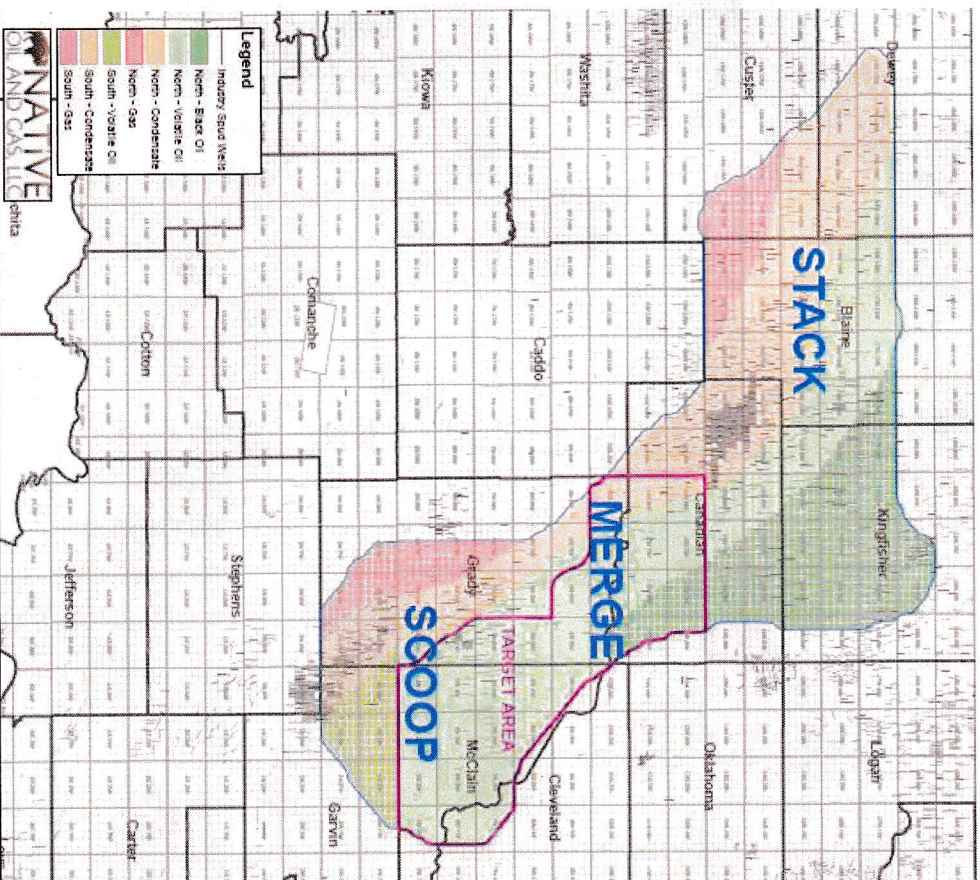
General Counsel / Land Advisor

- Thomas Moratto is General Counsel and Land Advisor at Native and joined the team in 2018
- Previously, Mr. Moratto was Legal Counsel at Chesapeake Energy Corporation
 - Provided support, advisement and counsel for various legal issues specific to the Mid-Continent Business Unit
 - Before being promoted to Legal Counsel, he served as Landman for Chesapeake Energy Corporation in the Mid-Continent Business Unit
- Earned a Bachelor of Arts in English from The University of Texas and a Law Degree from the University of Tulsa



Executive Summary

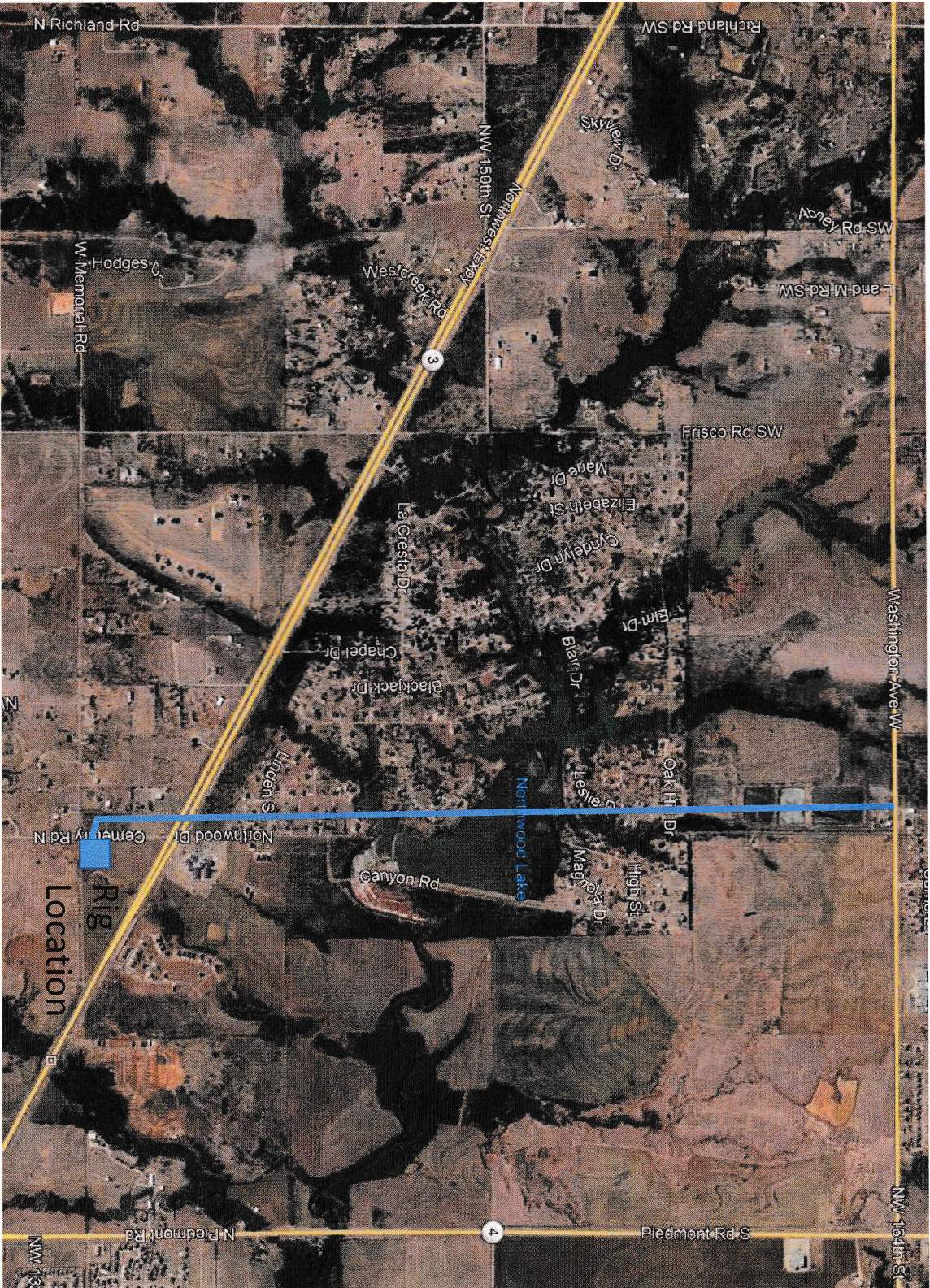
- **Proven Track Record**
 - Native Exploration Holdings, LLC ("Native") is Native's fourth fund ("Fund IV") with a strategy to acquire operated leasehold in the SCOOP/MERGE/STACK plays located in Oklahoma
 - ~24,000 net acres of leasehold
 - 45 operated sections
 - Operate multiple legacy vertical wells
 - Plan to drill 10-20 wells
 - Currently have a rig running in Canadian County – 3 miles SW of El Reno
 - Native and Kayne Anderson (capital provider) partnered in 2017 to execute strategy - <http://kaynecapital.com/energy-infrastructure/energy-private-equity/>
- Fund IV is a continuation of Native's successful track record of acquiring best-in-class assets in the Mid-Continent – Anadarko Basin
 - Fund I (SCOOP, March 2014)
 - Fund II (STACK & SCOOP, January 2015)
 - Fund III (STACK & SCOOP, July 2016)
- **Native's Proposed Bearskin 7-6-1305 1MXH**
 - Sections 6 & 7-13N-5W, Canadian County, OK
 - Surface/Rig Location – Section 8-13N-5W
 - South of NW Expressway
 - Target Zone – Meramec Shale
 - 7,644' below surface



Base Map

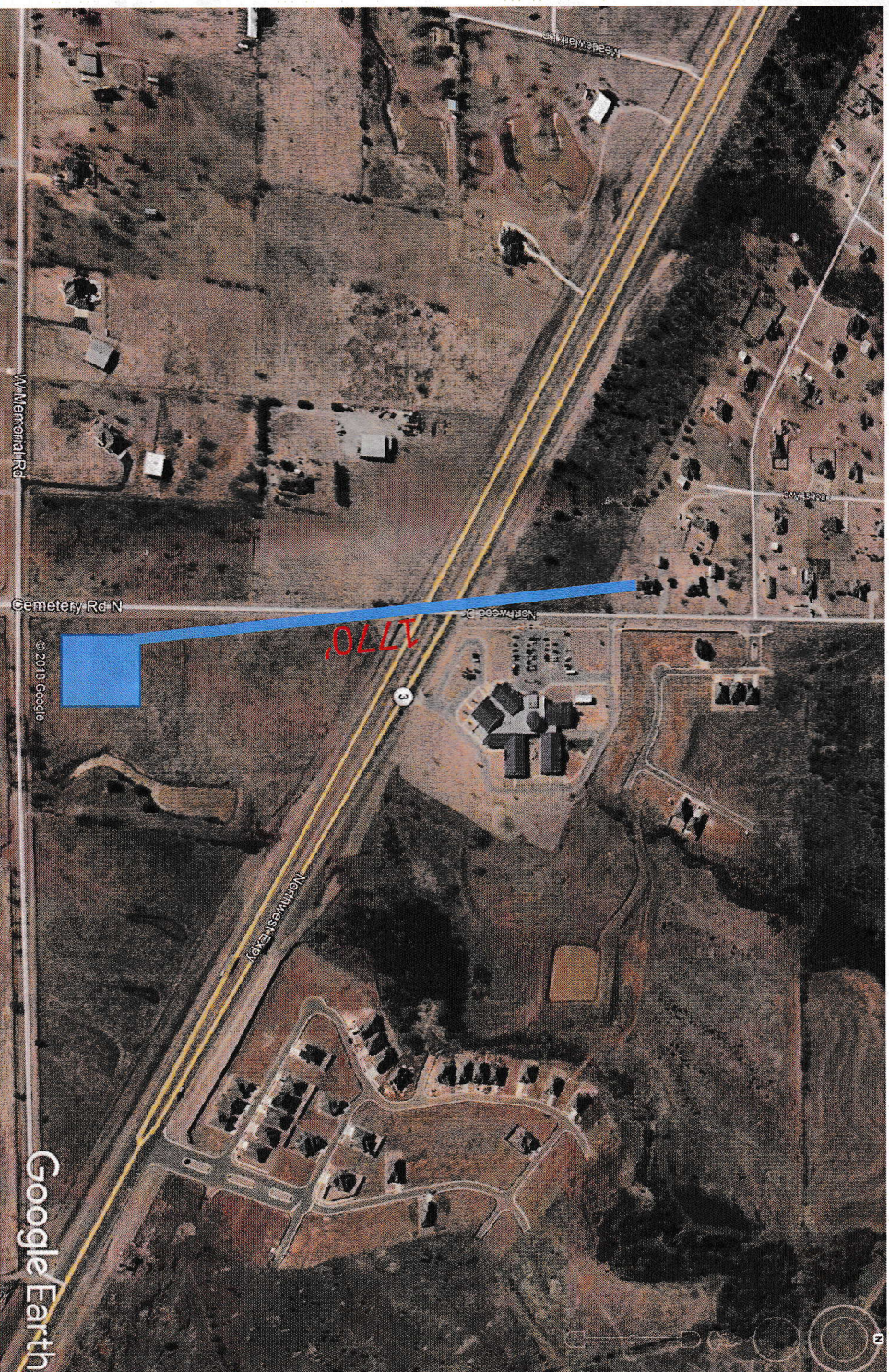


Base Map

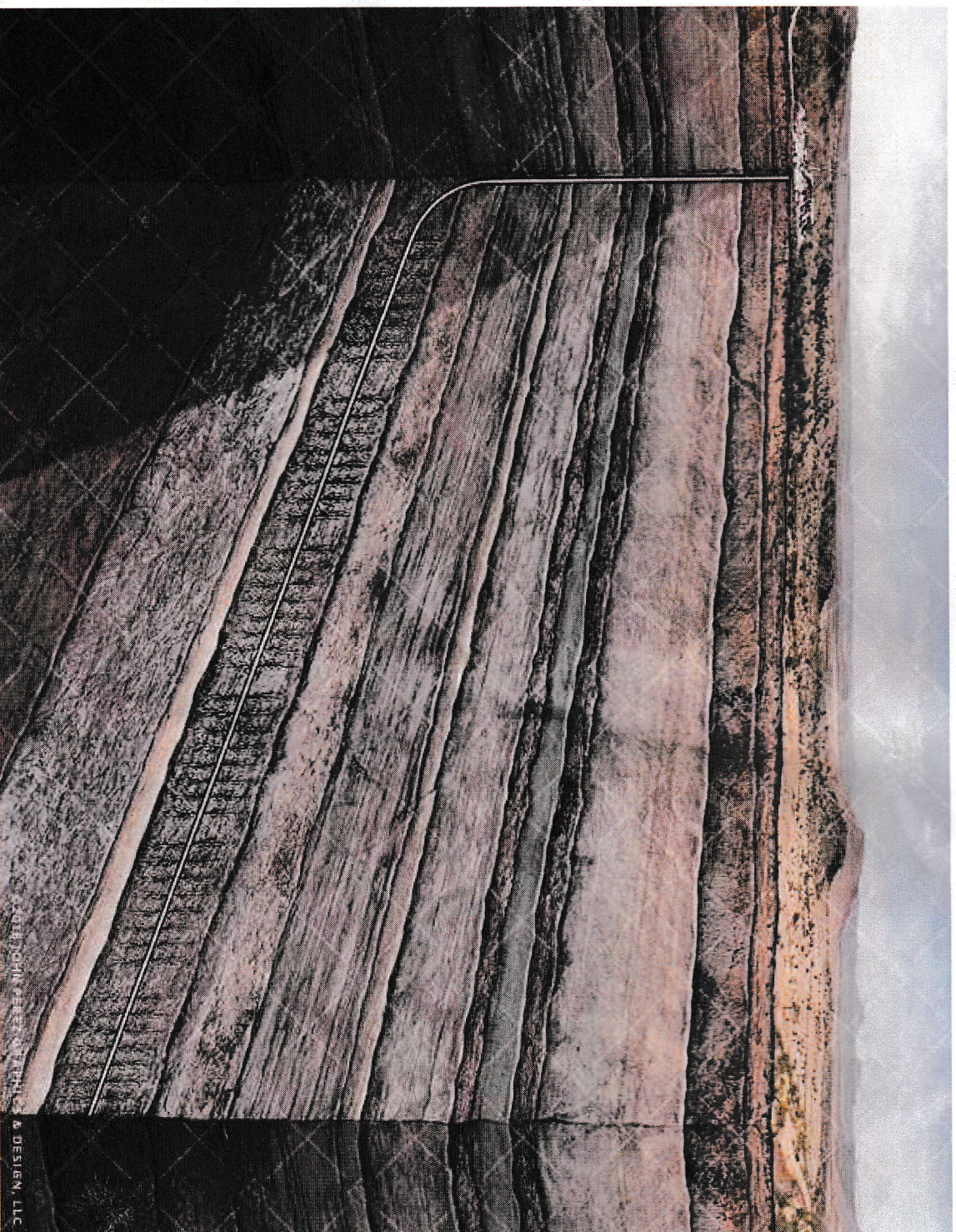


Base Map

Distance from Rig to nearest home in
Northwood Lake Estates ~1770' (.34 miles)



Horizontal well



7600'-7700' (1.4 miles or 9 Devon Energy Towers)

Contact Information

Lane Gibbs

Co-Founder and Co-CEO
(405) 603-5520 Ext. 303
Lane@nativeoilandgas.com

Matt Whitaker

Co-Founder and Co-CEO
(405) 603-5520 Ext. 302
Matt@nativeoilandgas.com



921 NW 63rd Street
Oklahoma City, OK 73116